

# Owner's Manual



## New England Firearms® Pardner® Pump

### IMPORTANT

This manual contains operating, care and maintenance instructions. To assure safe operation, any user of this firearm must read this manual carefully. Failure to follow the instructions and warnings in this manual can cause accidents resulting in injury or death. This manual should always accompany this firearm, and be transferred with it upon change of ownership.

**WARNING: KEEP THIS FIREARM OUT OF THE REACH OF CHILDREN, UNAUTHORIZED INDIVIDUALS, AND OTHERS UNFAMILIAR WITH THE SAFE HANDLING OF FIREARMS.**

#### Before You Use This Firearm

It is very important that you read and understand this manual before using this firearm. Warnings should be read and heeded carefully.

• **WARNING:** It is a violation of federal law to alter or deface the serial number of any firearm.

#### How Your Shotgun is Made

Your new shotgun has been made to H&R 1871, LLC's strictest standards of safety and reliability. It has been tested using proof and service ammunition that meets Sporting Arms & Ammunition Manufacturers Institute (SAAMI) & American National Standards Institute (ANSI) performance standards.

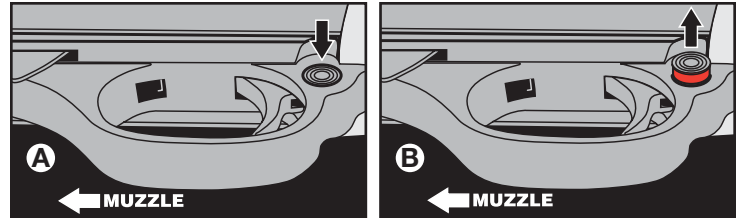
#### Your New Pump Shotgun

- 12-gauge, 3" chamber. Designed to handle 2¾" and 3" shells interchangeably.
- 12-gauge, 3½" chamber. Designed to handle 2¾", 3" and 3½" shells interchangeably.
- 20-gauge, 3" chamber. Designed to handle 2¾" and 3" shells interchangeably.

Your shotgun will function with factory-loaded ammunition of any shot size, as well as rifled slugs and sabots.

The barrel is equipped with an internal modified choke tube. It can be removed or tightened with a quarter-size coin. (Be sure it is tight before firing.) Additional choke tubes (Winchester/Browning/Mossberg-type) can be purchased from a gun shop.

• **WARNING:** Except for installation of the barrel, your gun was shipped fully assembled. It should not be used or disassembled without reading and understanding the instructions in this manual.



SAFE Position

FIRE Position

#### How to Operate the Safety

• **WARNING:** Before installing the barrel, become thoroughly familiar with the operation of the safety.

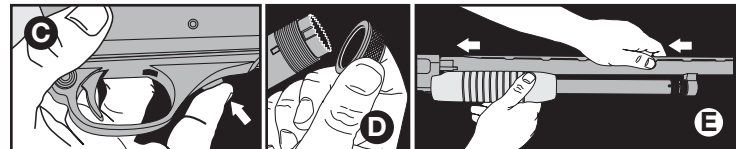
The safety mechanism is a round button located behind the trigger. To put your shotgun on SAFE, hold it in the normal shooting position, pointed in a safe direction, and push the safety button from left to right as far as it will go. The safety is now on SAFE (See A). To move your safety to the FIRE position, push the safety button from right to left as far as it will go. A red ring will appear on the left side of the safety button when it is in the FIRE position (See B). If the trigger is pulled with the safety in this position, the gun will fire.

• **WARNING:** The safety has been correctly designed and tested. Any mechanical device can fail, however, so never rely on the safety to justify careless handling.

#### How to Install the Barrel

Look through the barrel to be sure it is free of grease, oil or any other obstruction.

With the safety on SAFE, press the slide lock release lever (See C), and open the action approximately half way.



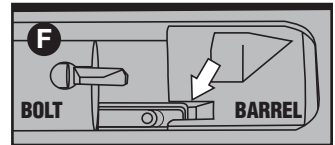
Press slide lock release

Removing magazine cap

Installing barrel

• **WARNING:** Do not fully cycle the action, as this can cause the ejector to break.

Remove the magazine cap (See D). Install the barrel (See E), being sure to mate the aligning tab in the receiver with the corresponding cut in the barrel (See F). Be sure the barrel is firmly seated in the receiver, and replace the magazine cap while pushing rearward on the barrel.



Aligning receiver and barrel

#### How to Load

**NOTE:** Your shotgun was shipped with a 2-shot plug installed, which is required when hunting migratory waterfowl. If you want to remove it, see the section of this manual entitled "How to Remove the Magazine Plug."

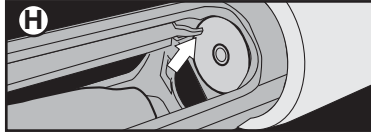
• **WARNING:** Before loading, always check the bore to be sure it is free of grease, oil or any other obstruction, and the safety is on SAFE.

#### Loading the Magazine

Before loading, be sure that: 1) the gun is pointed in a safe direction, 2) the safety is on SAFE, 3) the chamber is empty, and 4) the bolt is closed.



Loading the magazine



Shells must pass shell stop

Load up to two 2 $\frac{3}{4}$ " or 3" shells (assuming the magazine plug is installed), by pushing them (crimped end toward the muzzle) into the magazine loading port (See G). Be sure each shell passes beyond the shell stop (See H).

### Loading the Chamber

Press the slide lock release lever (See C) and pump the action all the way back and all the way forward one time. Load one more shell into the magazine (See G).

### Loading a Single Shell

With the action all the way open, place a single shell directly into the chamber, and close the action.

•**WARNING:** When either of the above loading procedures is finished, your shotgun is cocked and ready to fire as soon as the safety is pushed to the FIRE position.

## How to Fire

With the gun pointed at the target, push the safety to the FIRE position and squeeze the trigger.

After firing, pull the forearm all the way back to eject the fired shell, and push the forearm all the way forward to chamber the next shell.

If you do not fire all shells at the target, be sure to put the safety on SAFE until you are ready to shoot again.

## How to Unload

•**WARNING:** Before unloading, be sure the safety is on SAFE and your gun is pointed in a safe direction.

**Step #1.** Push the slide lock release lever and open the action slowly until the front of the shell is visible in the ejection port. Lift the front of the shell outward and remove the shell from the ejection port.

**Step #2.** Continue to pull the forearm back until the next shell is released from the magazine.

**Step #3.** Tip the gun sideways so that the shell drops from the ejection port.

**Step #4.** Push slide lock release and work the action in this manner until all shells have been removed.

**Step #5.** Check action and magazine to make sure no shells remain.

## What to do if Your Shotgun Fails to Fire

**1. Underpowered Shot.** A "squib" or underpowered shot should not occur if the ammunition is clean, dry and factory-loaded. You can tell if a shot is underpowered by the unusually low report it makes.

•**WARNING:** Because wads, shot protector or lead may still be in the barrel, you must unload completely and, with the action open, and the safety on SAFE, look through the barrel to see if there is any obstruction. If there is, it must be removed before shooting the gun again.

**2. Misfire.** If you squeeze the trigger and the shell does not fire, remain in shooting position and count to 10. Then operate the action to eject the misfired shell.

## How to Remove the Magazine Plug

**Step #1.** With the gun empty, the safety on SAFE, and the gun pointed in a safe direction, press the slide lock release lever and pull the forearm half way back.

**Step #2.** Remove the magazine cap (See D) and reverse step E.

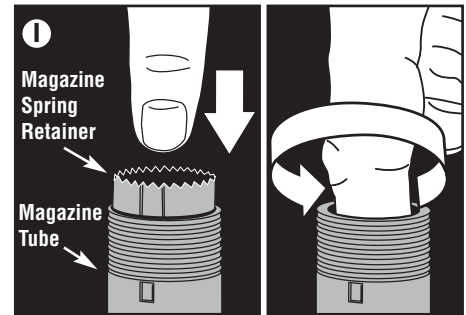
**Step #3.** Insert your index finger into the slotted magazine spring retainer (See I). Push the magazine spring retainer into the magazine about 1 $\frac{1}{2}$ ".

**Step #4.** Turn the retainer 90° and slowly release it out the front of the tube (See I).

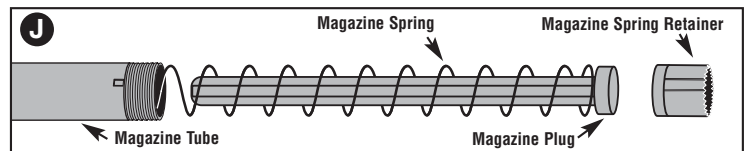
•**WARNING:** Wear eye protection and use caution when removing the retainer as it is under tension from the magazine spring.

**Step #5.** Remove the retainer and plug, and separate them (See J).

**Step #6.** Place the retainer on the end of the magazine spring, line up the detents on



Insert index finger into retainer and turn 90°



Remove retainer and plug

the retainer with the detents on the magazine, and reverse the removal process (See K).

**Step #7.** Release the retainer slowly to be sure it is securely seated.

**Step #8.** Replace the barrel and tighten the magazine cap (See D and E).

Your shotgun now has a magazine capacity of five.

## How to Clean Your Shotgun

•**WARNING:** Your shotgun should be completely unloaded and on SAFE while cleaning.

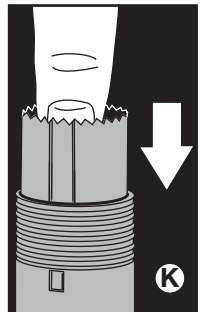
Remove the barrel as described previously. Clean the bore from the breech end, using any standard 12 gauge cleaning rod, brush, and patches with powder solvent.

You do not need to clean the action under normal conditions, and further disassembly is not recommended.

•**WARNING:** Never attempt to wipe down or clean a loaded gun.

Avoid the use of oil during below freezing conditions. A dry graphite used sparingly is recommended for cold weather lubrication. Condensation droplets may form soon after the gun is brought into a warm room, or it may become wet during inclement weather. In any case, all moisture should be removed. Exterior metal finishes may be wiped down with a slightly oiled cloth. For long term storage, lightly oil the bore, barrel and action with gun oil. Your gun should be completely unloaded and stored in a dry area. Never store your gun in a carrying case.

•**WARNING:** We specifically disclaim responsibility for any damage or injury occurring in connection with, or as the result of, the use, in any H&R manufactured or distributed firearm, of faulty, non-standard, "remanufactured", or handloaded (reloaded) ammunition.



Line up detents and replace retainer

## Guide to Firearm Safety

1. Read and understand the owner's manual before using a firearm.
2. If you are unfamiliar with firearms, attend a firearms safety class taught by a certified instructor.
3. Handle every firearm as if it were loaded and ready to fire.
4. Control the muzzle, and never point a firearm at anything you don't want to shoot.
5. Keep the safety on SAFE until you are ready to shoot.
6. Unless you are hunting, carry your firearm empty, with the action open.
7. Before shooting, be sure you have an adequate backstop. All ammunition is dangerous beyond your line of sight.
8. Avoid ricochets by never shooting at water or any hard, flat surface.
9. Do not run, climb, or jump over an obstacle with a loaded firearm.
10. Do not climb into or out of a tree or tree stand with a loaded firearm. Do not allow others to pass loaded firearms to you while in a tree stand.
11. Do not enter or ride in a motor vehicle with loaded firearms.
12. Do not lean a loaded firearm against anything.
13. Do not bump, drop or jar a loaded firearm.
14. Do not pull a firearm toward you by the muzzle.
15. Wear hearing protectors when shooting.
16. Wear impact-protective glasses when shooting, disassembling or cleaning firearms.
17. Avoid alcoholic beverages and drugs before and during shooting.
18. Use only ammunition of the correct gauge, caliber, size and bullet shape for your firearm.
19. Do not use damaged, dirty, modified, or improperly handloaded ammunition.
20. Keep the barrel and mechanism of the firearm free of obstructions.
21. Do not use a firearm that fails to function properly. Do not try to force a jammed action.
22. Be sure no one is in the path of ejecting shells or cartridges.
23. Do not interchange parts between firearms, and be sure disassembly and reassembly are correct and complete.
24. Before cleaning, be sure the chamber, action and magazine are completely unloaded.
25. Unload firearms before storing, transporting, or leaving unattended.
26. Store firearms and ammunition separately, locked and out of the reach of children.

**Failure to follow these rules, or other instructions in this manual, can result in personal injury or death.**

**Health Warning:** Discharging of firearms in poorly ventilated areas and handling ammunition may cause exposure to lead and/or lead compounds. Exposure may cause cancer, birth defects or damage to the kidney, nervous, blood forming and reproductive systems. Have adequate ventilation at all times, especially in confined areas. Wash hands thoroughly after shooting, handling ammunition, or cleaning a firearm. Do not eat or smoke during these activities.

**Safety Warning:** We strongly recommend that you take a hunter safety course, taught by a certified instructor, before you use this firearm. Your State Fish & Game Department or a local gun shop can suggest courses in your area.

**Safety Warning:** Keep this firearm out of the reach of children, unauthorized individuals, and others unfamiliar with the safe handling of firearms.

## LIMITED WARRANTY

H&R 1871, LLC

### TWO YEAR LIMITED WARRANTY AGAINST DEFECTS IN MATERIAL & WORKMANSHIP

This firearm warranty is good only to the ORIGINAL OWNER who has registered his ownership with H&R 1871, LLC at 60 Industrial Rowe, Gardner, MA.

WARRANTY and CERTIFICATE OF OWNERSHIP card **must** be completed and mailed to H&R 1871<sup>®</sup> at the above address WITHIN TEN (10) DAYS of purchase to insure the protection of the warranty. NOTICE of defect in materials and/or workmanship **must** be received by the company WITHIN TWO (2) YEARS from the date of purchase.

Normal wear, or damage resulting from neglect, abuse, alteration, or repairs not made or authorized by H&R 1871<sup>®</sup> or use of non-H&R parts are not covered by the warranty.

THIS WARRANTY GIVES YOU SPECIFIC LEGAL RIGHTS, AND YOU MAY ALSO HAVE OTHER RIGHTS WHICH VARY FROM STATE TO STATE.

### H&R 1871, LLC'S PERFORMANCE UNDER THE ABOVE WARRANTY

1. After notice of defect in material and/or workmanship is received by H&R 1871, LLC, H&R shall send instructions for shipment of the firearm; and repairs will be made and the firearm returned within a reasonable time after the firearm is received. Cost of shipping, insurance charges, etc. involved in returning the firearm to the company shall be prepaid by the original owner.
2. Cost of parts and labor performed shall be provided without charge by H&R 1871<sup>®</sup>.
3. If H&R 1871<sup>®</sup>, after receipt of the firearm, determines that the defects in material and/or workmanship were the result of abuse and/or neglect, or otherwise not covered by the warranty set forth above, H&R shall notify such owner to that effect and give an estimate for repair. In such cases, repair, return shipping and insurance charges, etc. shall be paid by such owner.
4. In the event that H&R 1871<sup>®</sup> is unable to make warranty repairs to the firearm, it shall, within a reasonable time after its receipt, notify the owner to that effect and give him the option either to receive a replacement of the same model, if then available in its inventory, or to receive a refund, either of which, if feasible, will be made through the store of purchase.

H&R 1871, LLC • 60 Industrial Rowe • Gardner, MA 01440 U.S.A. • [www.hr1871.com](http://www.hr1871.com)

## WARNING

**Children are attracted to and can operate firearms that can cause severe injuries or death.**

**Prevent child access by always keeping guns locked away and unloaded when not in use. If you keep a loaded firearm where a child obtains and improperly uses it, you may be fined or sent to prison.**

## ADVERTENCIA

**A los niños los atraen las armas de fuego y las pueden hacer funcionar. Ellos pueden causarse lesiones graves y la muerte.**

**Evite que los niños tengan acceso a las armas de fuego guardándolas siempre con llave y descargadas cuando no las esté utilizando. Si usted tiene un arma de fuego cargada en un lugar en que un niño tiene acceso a ella y la usa indebidamente, le pueden dar una multa o enviarlo a la cárcel.**

Manufactured for: H&R 1871, LLC  
60 Industrial Rowe, Gardner, MA 01440 U.S.A.  
[www.hr1871.com](http://www.hr1871.com)

Part # S03105

7/06



# Pardner® Pump Shotgun

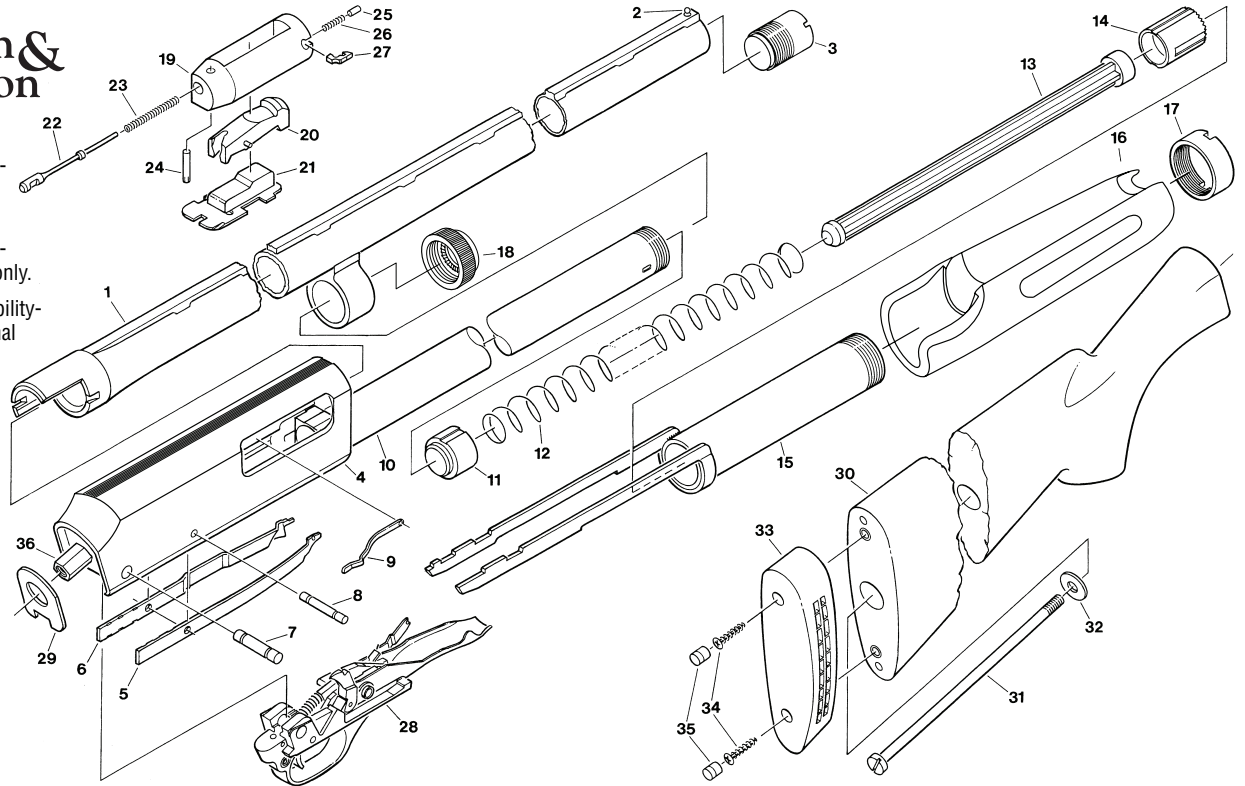
12 Gauge • 20 Gauge  
Youth • Slug • 3" Chamber

**Harrington & Richardson**

\* Restricted availability-  
Part sent to qualified  
gunsmith only.

\*\* Restricted availability-  
Parts installed at factory only.

\*\*\* Non-restricted availability-  
Part may require some final  
fitting sanding or filing.



ILL. NO.	PART NAME
**1	.BARREL ASSEMBLY
2	.SIGHT-BEAD
3	.CHOKE
*4	.RECEIVER & MAGAZINE TUBE ASSY.
5	.LATCH-RIGHT SHELL
6	.LATCH-LEFT SHELL
7	.PIN-REAR TRIGGER GUARD
8	.PIN-FRONT TRIGGER GUARD
*9	.SPRING-EJECTOR
**10	.CARRIER
11	.MAGAZINE FOLLOWER
12	.MAGAZINE SPRING
13	.MAGAZINE PLUG
14	.RETAINER-MAGAZINE SPRING
15	.ACTION BAR ASSEMBLY
**16	.FOREND
17	.NUT-FOREND TUBE
18	.MAGAZINE CAP
19	.BOLT-BREECH
**20	.LOCKING BLOCK
21	.SLIDE ASSEMBLY
**22	.PIN-FIRING
23	.SPRING-FIRING PIN RETRACTOR
24	.PIN-FIRING PIN RETAINING
25	.PLUNGER-EXTRACTOR
26	.SPRING-EXTRACTOR
**27	.EXTRACTOR
28	.TRIGGER PLATE PARTS ASSY. (SEE FIGURE #2)
29	.STOCK BEARING PLATE
30	.STOCK ASSY.
31	.BOLT-STOCK
32	.WASHER-STOCK BOLT

ILL. NO.	PART NAME
33	.PAD-RECOIL
34	.SCREW-RECOIL PAD
35	.PLUG-RECOIL PAD SCREW
36	.RECEIVER STUD
37	.HAMMER PIVOT PIN WASHER
38	.N/A
**39	.LOCK-ACTION BAR
40	.SPRING-ACTION BAR LOCK
**41	.DOG-CARRIER
**42	.TRIGGER PLATE
43	.TRIGGER ASSEMBLY
**44	.HAMMER
**45	.FOLLOWER-CARRIER DOG
**46	.SPRING-CARRIER DOG FOLLOWER
**47	.PIN-CARRIER DOG
**48	.TUBE-CARRIER PIVOT
49	.PIN-HAMMER PIVOT
50	.PLUNGER-HAMMER
51	.SPRING-HAMMER
**52	.BUTTON-SAFETY
**53	.BALL-SAFETY DETENT
**54	.SPRING-SAFETY DETENT
**55	.SEAR
56	.PIN-TRIGGER
57	.BUSHING-REAR TRIGGER PLATE PIN
58	.SPRING-FRT. TRIG. PLATE PIN DETENT
59	.SPRING-REAR TRIG. PLATE PIN DETENT
**60	.CARRIER DOG WASHER
**61	.SAFETY SWITCH SPRING RETAINING PIN
62	.SEAR PIN
63	.SPRING-SEAR

